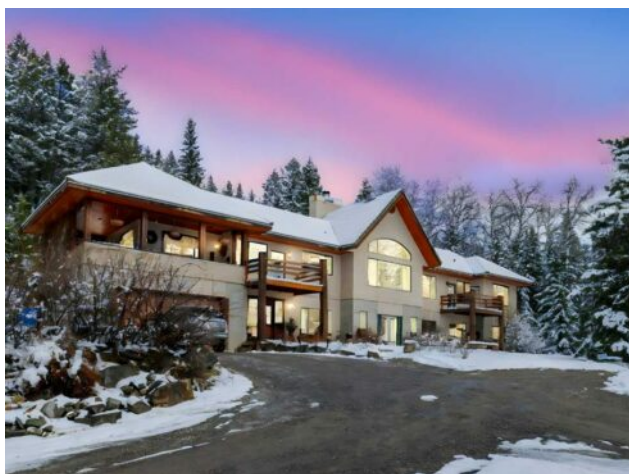




www.keyz.ca
admin@keyz.ca

271165 Range Road 60
Rural Rocky View County, Alberta

MLS # A2214319



\$3,300,000

Division:	NONE		
Type:	Residential/House		
Style:	Acreage with Residence, Bungalow		
Size:	2,457 sq.ft.	Age:	2000 (25 yrs old)
Beds:	5	Baths:	3 full / 1 half
Garage:	Double Garage Attached		
Lot Size:	161.00 Acres		
Lot Feat:	Creek/River/Stream/Pond, Gentle Sloping, Treed		

Heating:	Boiler, In Floor, Natural Gas	Water:	Well
Floors:	Carpet, Ceramic Tile, Hardwood, Slate	Sewer:	Open Discharge, Septic Tank
Roof:	Clay Tile	Condo Fee:	-
Basement:	See Remarks, Walk-Out To Grade	LLD:	12-27-6-W5
Exterior:	Stucco	Zoning:	A-SML
Foundation:	ICF Block	Utilities:	-
Features:	Central Vacuum, Double Vanity, French Door, High Ceilings, Jetted Tub, Steam Room		

Inclusions: all curtain rods, Bell express view dish, Table on back deck, black out curtains in primary bedroom, built in Vac and attachments

Welcome to 161 acres of paradise tucked away from any neighbors with mountain views and only 20 minutes from Cochrane. You are sure to be impressed with this reverse walk-out Bungalow built into the hillside. Starting with ICF foundation walls right up to the rafters. Poured concrete floors on each level with infloor heat and concrete tile roof. The main floor features a massive wood burning rock facing fireplace that warms up the Great room with the tall barreled ceiling and enjoys the mountain views. Tucked behind the fireplace is the dining room. The kitchen features lots of cabinets and counters and a commercial gas Stove with a double oven. Breakfast nook overlooks the deck and views. Next is the Bonus room with electric fireplace and wall units making this a great TV room. From here step out onto the incredible wrap-around covered deck. On the south side enjoy the mountain views and overlook your own paradise. Trust me this is a special place to relax and enjoy nature as it unfolds before your eyes. On the north side step down onto the massive patio area to enjoy large family gatherings. Back in the house past the Great room is an office and the Master bedroom with a walk-in closet and ensuite featuring a large jetted soaker tub and tiled steam shower and double sinks. Don't miss the sitting room for reading your favorite book. The lower level features 4 large bedrooms, high ceilings, a large family room, laundry area, and large entrance with slate flooring. The oversized heated double attached garage with high ceilings makes a great hobby room or park two vehicles in the 24 x 24 ft space. Check out the 32 x 24 ft heated shop with mezzanine and lots of storage yard space. All this and still 161 acres of land to explore. Call for your personal viewing today!